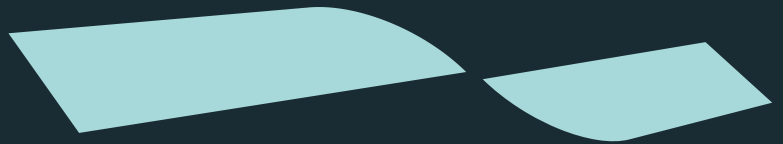




FLEXSTONE



BRINGING THE STONE AGE INTO THE FUTURE



Stone Veneers | **2023/24 Brochure**

...Bringing the stone age into the future

The image features two abstract, teal-colored shapes. One is a smaller, curved shape on the left side, and the other is a larger, more complex shape on the right side, both appearing to be part of a larger graphic design.



What is Flex-Stone? Real stone veneer?

Flex-Stone is a wafer-thin, real stone veneer. The 100% natural stone surface is supported with a thin layer of fiberglass for better stability and ease of application. No two batches are the same, therefore your project is truly unique to you.

We turn ideas into works of art.

Flex-Stone was founded by Larry Lambert and Jason Wright who between them, have a wealth of knowledge and experience in property builds and renovation spanning over 70 years! Our installation teams will ensure that your project however simple or complicated it is, will be finished to the highest standard of workmanship. Alongside Flex-Stone Larry and Jason both run their successful project management companies.



Our Services.

Flex-Stone is a wafer-thin, real stone veneer. The 100% natural stone surface is supported with a thin layer of fiberglass for better stability and ease of application. No two batches are the same, therefore your project is truly unique to you.





Partnership

For each project we establish relationships with partners who we know will help us create added value for your project. As well as bringing together the public and private sectors, we make sector-overarching links to gather knowledge and to learn from each other. The way we undertake projects is based on permanently applying.



Design Service

We offer a full design service and will discuss the application in detail, advice on suitable finishes and applications is also available.



Installation Service

Our installation teams will ensure that your project however simple or complicated it is will be finished to the highest standard of workmanship. Alongside Flex-Stone Larry and Jason, both run their successful project management companies

Our Backgrounds.

Spanning 70 years of combined experience in construction and re-development, Larry and Jason setup Flexstone.



Larry Lambert

Larry's career started as an Exhibition Assistant producing displays and construction of exhibition stands and he was then promoted to Advertising and Exhibitions Manager for an international company with budget responsibility for the overall Group international advertising and Exhibitions budget. Following Larry's transition into the property market in the 70's utilising his design experience and adapting it to a successful property design and construction career Larry's experience grew to what it is today.

Larry has been involved in running an independent family owned property and investment company which was formed in 1927. This inevitably gave Larry a good grounding in property construction and redevelopment. Larry has been involved in major projects requiring complex construction through to historical restoration of Listed buildings. The list goes on over a 45 year period and Larry always took a hands-on approach to all the projects he was involved with and has in recent years concentrated on project management, whilst keeping his eye on the detail.

Larry researched veneers for a clients project and this has led to the formation of a business with Jason Wright. They have worked together on a number of projects together over the years and with their combined team of tradespeople will provide the standards of excellence that both Jason and Larry both adhere to.

Jason Wright

Jason began his career in the trade over 38 years ago when he trained at Leicester college and completing a 4-year City & Guilds Plumbing and Heating Qualification.

At aged 21, Jason set up his own plumbing and heating company which he then sold after 5 years of successful trading. At age 26, Jason started another plumbing and heating company (F&W Plumbing & Heating Services Limited) which over the past 28 years has built up an outstanding reputation across the UK with an equally impressive portfolio showcasing his vast experience and knowledge, working for both commercial and domestic customers.

In 1998, Jason then jumped onto the buy-to-let ladder and set up a property letting company called F&W Properties. Utilising his experience and knowledge from plumbing and heating, this helped fine-tune Jason's skills in property development.

In 2004, Jason opened a bathroom showroom in Leicester. After two successful years the showroom was sold onto a prospective buyer. Fast forward to 2017, Jason decided to follow his property development dream and set up JLR Bespoke Property Renovations Limited. With the assistance of his knowledgeable and highly experienced partner Larry Lambert, together they provide a top-quality service and are armed with a reliable and well-seasoned team for renovating all types of property. 2020 Flex Stone was set up

How is Flexstone produced?

Flex-Stone is produced by our innovative method using the best quality natural stone and slate blocks from all over the world to create wafer-thin sheets. A fiberglass liquid is added during production which enables the layers to be manually peeled away from the blocks.

Flex-Stone's uniqueness is not only down to the natural colours and structures produced by stone, but also by various other properties:

- Due to Flex-Stone's 2-4mm thickness, it is completely flexible.
- Flex-Stone is very light: Weighing at 1,5 kg per m², this reduces transport costs significantly compared to traditional stone slabs. This also aids in the degrading of natural resources.
- The chemical elements are harmless to health and correspond to the highest quality industry standards.



Our Products

Slate & Stone

Slate & Stone - a thin and feather-weight stone sheet with a fiberglass backing. This product is extremely versatile and flexible meaning this can be used as a wall covering inside and outside. • Sizes: 122 x 61cm & 240 x 120cm (thickness: 2-4 mm)

Translucent & Slate

Translucent & Slate - a thin stone sheet combined with a transparent resin backing creates a product which can have a light source installed behind resulting in a unique back lit pattern. This product is suitable for a room centre-piece/reception counter/bar. • Sizes: 122 x 61cm & 240 x 120cm (thickness: 2-4 mm)

Concrete & Metal

Concrete & Metal – a thin and lightweight sheet made up of concrete and pigment combined with the fibreglass backing. This product is ideal with internal feature walls and furniture coverings. • Sizes: 122 x 61cm (thickness: 2-4 mm)



Applications and Design.

Applications for the range of veneers is almost limitless so quite apart from creating stunning feature walls the number of differing applications is limited only by your creativity. It can be applied internally and externally with equal effect.

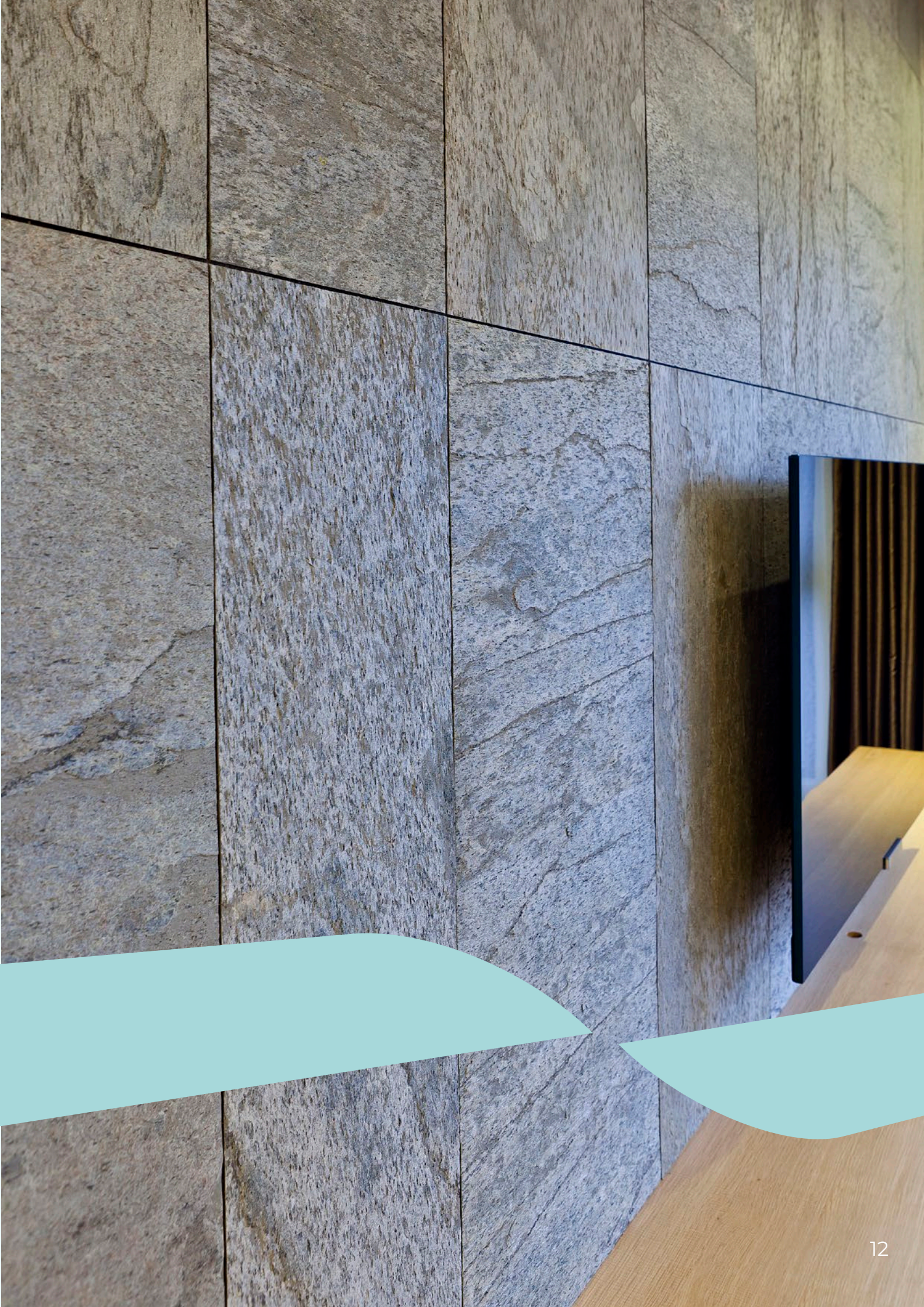
It can be used both in a commercial environment or domestic. As long as the surface is dry and reasonably flat then by using the appropriate recommended adhesive it will adhere to almost any surface. The product is as much as at home in a shower cubicle as it is on a feature media wall. It can be used to great effect in re vamping a kitchen as it would be to externally clad a building. There is something for everyone within the range from a polished concrete finish to the beautiful translucent light emitting sheets.

We offer a full design service and will discuss the application in detail, advice on suitable finishes and applications is also available.



Stone and Slate Veneers.

100% stone veneers cut to enhance your living or work space.





Molto Rosa Veneer

This material has a pink-red and grey/green textured slate finish with a varied natural pattern in the material. It is a fantastic option if you are looking for a subtle and textured natural slate finish. This material is suitable for internal and external walls, flooring, showers, furniture, and door cladding.

Available in 122cm x 61cm | 240cm x 120cm sheets
Product Code: F039



Falling Leaves Veneer

This material has a Grey/White textured slate finish with some random red and beige tones veining in the pattern of the material. It is a fantastic option if you are looking for a subtle and textured natural slate finished, coupled with a grey/white colour tone. This material is suitable for internal and external walls, flooring, showers, furniture, and door cladding.

Available in 60cm x 30cm (box of 6) | 122cm x 61cm | 240cm x 120cm sheets
Product Code: F024



Green Pearl Veneer

This material has a light green textured slate finish with some random mild cream veining in the pattern of the material. It is a fantastic option if you are looking for a subtle and textured natural slate finished, coupled with a light green colour tone. This material is suitable for internal and external walls, flooring, showers, furniture, and door cladding.

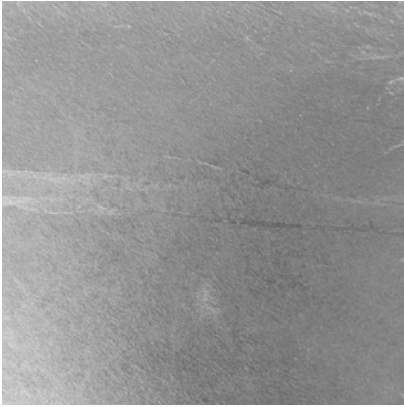
Available in 122cm x 61cm | 240cm x 120cm sheets
Product Code: F032



Auro Veneer

There is a mix of red, green, grey, and silver in Auro's colour, it has a beautiful shine and sparkle to its textured finish. This material is suitable for internal and external walls, flooring, showers, furniture, and door cladding.

Available in 122cm x 61cm | 240cm x 120cm sheets
Product Code: F010



Terra Black Veneer

Terra Black is the classic black slate finish with a line pattern running through the stone. It has a mild riven and natural texture and is ideal for any project requiring a black slate finish. This material is suitable for internal and external walls, flooring, showers, furniture, and door cladding.

Available in 122cm x 61cm | 240cm x 120cm sheets
Product Code: F031



Copper Metal Veneer

Copper Metal veneer has a textured finish with a reflective shine. This material is suitable for all internal feature wall applications and furniture cladding. The material is not suitable for wet areas.

Available in 122cm x 61cm
Product Code: F019



Burning Forest Multi Brick Veneer

The multi brick sheets are made up of around 70 individual slate veneer pieces, made into a brick style pattern with two different width pieces, 5cm, and 2.5cm. The overall sheet size is 120 x 60cm and you can butt joint the material so the joints between each sheet are not seen. This material has varying dark green, reds, copper, orange and brown slate tones and natural texture and shine. This material is ideal for feature walls.

Available in 122cm x 61cm sheets
Product Code: F013



Verde Gris Veneer

This material has a dark green and grey base colour, with wonderful texture and pattern. This material is suitable for internal and external walls, flooring, showers, furniture, and door cladding.

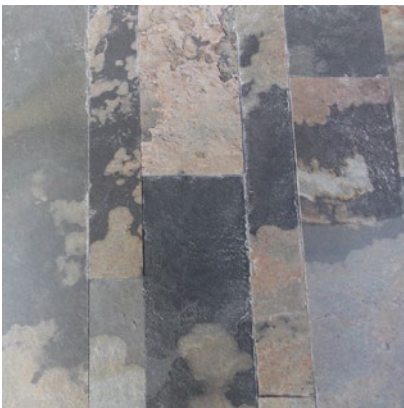
Available in 60cm x 30cm (box of 6) | 122cm x 61cm | 240cm x 120cm sheets
Product Code: F008



Nero Veneer

Nero Slate is the classic black slate finish. It has a mild riven and natural texture and is ideal for any project requiring a black slate finish. This material is suitable for internal and external walls, flooring, showers, furniture, and door cladding.

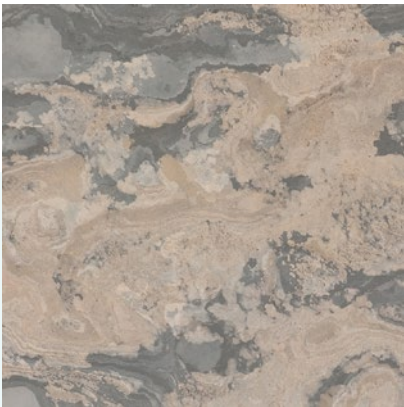
Available in 122cm x 61cm | 240cm x 120cm sheets
Product Code: F033



Rustique Multi Brick Veneer

The multi brick sheets are made up of around 70 individual slate veneer pieces, made into a brick style pattern with two different width pieces, 5cm, and 2.5cm. The overall sheet size is 120 x 60cm and you can butt joint the material so the joints between each sheet are not seen. This material has a combination of black and beige swirling patterns with a natural slate finish. This material is ideal for feature walls.

Available in 122cm x 61cm sheets
Product Code: F016



Rustique Veneer

This material has a combination of black and beige swirling patterns with a natural slate finish. This material is suitable for internal and external walls, flooring, showers, furniture, and door cladding.

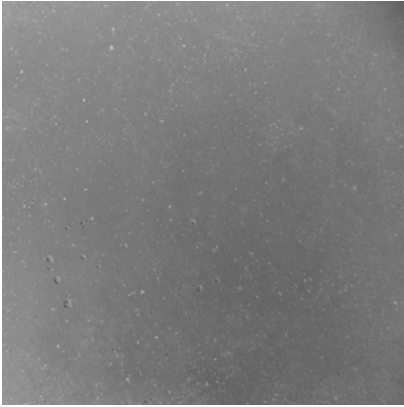
Available in 122cm x 61cm sheets
Product Code: F037



Mare Veneer

This material has a dark green base colour, with wonderful texture and pattern. It is one of our most popular materials. This material is suitable for internal and external walls, flooring, showers, furniture, and door cladding.

Available in 122cm x 61cm | 240cm x 120cm sheets
Product Code: F007



Dark Concrete Veneer

Dark Concrete veneer has a matt, dark grey finish that is smooth to the touch. With small mottled flecks in the sheet, the material is an ideal finish for minimalist, contemporary and industrial designs. This material is suitable for all internal feature wall applications and furniture cladding. The material is not suitable for wet areas.

Available in 122cm x 61cm sheets

Product Code: F021



Burning Forest Veneer

Burning Forest is one of our most eye-catching materials. It has a textured, high shine top surface finish. Its base colour is dark green with many striking brown and red veins running through the slate. Dark Wood is the perfect material if you are looking for a focal point that will give the wow factor to your project. This material is suitable for internal and external walls, flooring, showers, furniture, and door cladding.

Available in 122cm x 61cm | 240cm x 120cm sheets

Product Code: F004

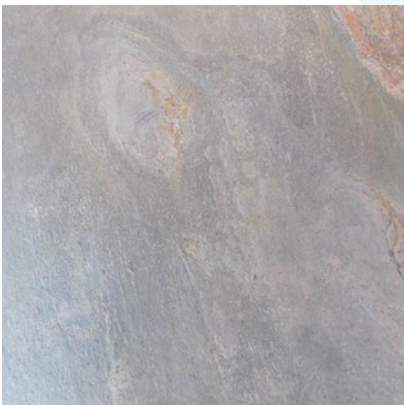


Black Pearl Veneer

Black Pearl has a beautiful dark grey and black base colour with a textured top surface finish and a reflective sparkle in the material which can provide a high end and contemporary finish for your project. This material is suitable for internal and external walls, furniture, and door cladding.

Available in 122cm x 61cm sheets

Product Code: F012



Rubigo Color Veneer

Rubigo Color has a beautiful dark grey base colour with varied veining and pattern in the sheet. It has a textured and matt finish. This material offers a high end and contemporary finish. This material is suitable for internal walls, flooring, showers, furniture, and door cladding.

Available in 122cm x 61cm sheets

Product Code: F036



Caldera Gold Veneer

This material has a brown, beige, and gold slate finish with a varied natural pattern in the material. It is a fantastic option if you are looking for a subtle and textured natural slate finish. This material is suitable for internal and external walls, flooring, showers, furniture, and door cladding.

Available in 122cm x 61cm sheets
Product Code: F027



Desert Rock Veneer

Desert Rock has a beautiful dark grey base colour with varied gold and red veining and pattern in the sheet. It has texture and a slight shine to the finish. This material offers a high end and contemporary look. This material is suitable for internal walls, flooring, showers, furniture and door cladding.

Available in 122cm x 61cm sheets
Product Code: F005



California Gold Veneer

This material has a black, grey, and gold slate finish with a varied natural pattern in the material. It is a fantastic option if you are looking for a subtle and textured natural slate finish. This material is suitable for internal and external walls, flooring, showers, furniture, and door cladding.

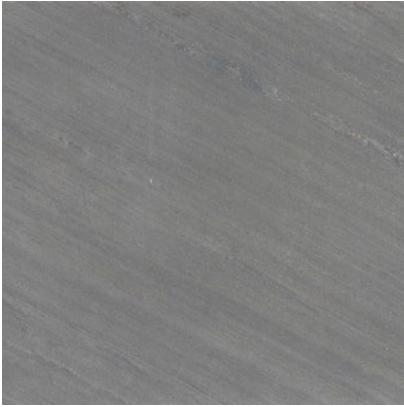
Available in 60cm x 30cm (box of 6) | 122cm x 61cm | 240cm x 120cm sheets
Product Code: F022



Silver Metal Veneer

Silver Metal veneer has a textured finish with a reflective shine. This material is suitable for all internal feature wall applications and furniture cladding. The material is not suitable for wet areas.

Available in 122cm x 61cm sheets
Product Code: F018



D Black Veneer

This material has a dark grey / black base colour with striking diagonal veins in the pattern of the slate. It has a smooth and natural finish. This material is suitable for internal and external walls, flooring, showers, furniture, and door cladding.

Available in 60cm x 30cm (box of 6) | 122cm x 61cm | 240cm x 120cm sheets
Product Code: F035



Tan Veneer

This material has a traditional and rustic slate finish. Its two base colours of grey and beige mix in together with natural swirls and patches in the pattern of the top surface. This material is suitable for internal and external walls, flooring, showers, furniture, and door cladding.

Available in 60cm x 30cm (box of 6) | 122cm x 61cm | 240cm x 120cm sheets
Product Code: F029



Galaxy Black Veneer

Galaxy Black has a black/dark grey textured slate finish, it has a shine and sparkle in the material which makes it one of our most popular contemporary dark slate finishes. This material is suitable for internal and external walls, flooring, showers, furniture, and door cladding.

Available in 60cm x 30cm (box of 6) | 122cm x 61cm | 240cm x 120cm sheets
Product Code: F009



Argento Auro Veneer

Argento Auro has a beautiful dark green base colour with a varied red / copper pattern in the sheet. It has a textured, high shine finish with directional veining in the textured pattern of the surface. This material offers a high end and contemporary finish. This material is suitable for internal and external walls, flooring, showers, furniture, and door cladding.

Available in 122cm x 61cm sheets
Product Code: F015



Silver Grey Multi Brick Veneer

The multi brick sheets are made up of around 70 individual slate veneer pieces, made into a brick style pattern with two different width pieces, 5cm, and 2.5cm. The overall sheet size is 120 x 60cm and you can butt joint the material so the joints between each sheet are not seen. This material has a combination of silver-grey tones with texture and a natural slate finish. This material is ideal for feature walls.

Available in 122cm x 61cm sheets
Product Code: F017



Silver Grey Veneer

Silver Grey is a very popular slate material. It has a dark grey silver colour, with the occasional tint of dark green. The textured natural movements in the material give it a classic slate finish. This material is suitable for internal and external walls, flooring, showers, furniture, and door cladding.

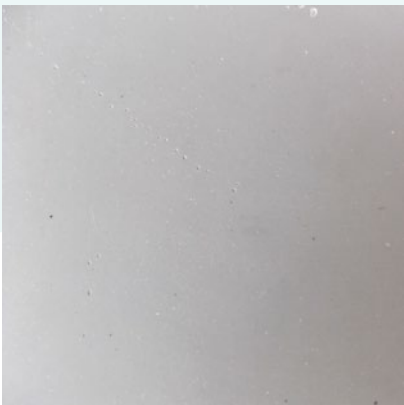
Available in 60cm x 30cm (box of 6) | 122cm x 61cm | 240cm x 120cm sheets
Product Code: F014



Argento Veneer

Argento has a beautiful dark green base colour. It has a textured, high shine finish with directional veining in the textured pattern of the surface. This material offers a high end and contemporary finish. This material is suitable for internal and external walls, flooring, showers, furniture, and door cladding.

Available in 60cm x 30cm (box of 6) | 122cm x 61cm | 240cm x 120cm sheets
Product Code: F006



Light Concrete Veneer

Light Concrete veneer has a matt, light grey finish that is smooth to the touch. With small mottled flecks in the sheet, the material is an ideal finish for minimalist, contemporary and industrial designs. This material is suitable for all internal feature wall applications and furniture cladding. The material is not suitable for wet areas.

Available in 122cm x 61cm sheets
Product Code: F020



Tan Multi Brick Veneer

The multi brick sheets are made up of around 70 individual slate veneer pieces, made into a brick style pattern with two different width pieces, 5cm and 2.5cm. The overall sheet size is 120 x 60cm and you can butt joint the material so the joints between each sheet are not seen. This material has a combination of light grey and beige swirling patterns with a natural slate finish. This material is ideal for feature walls.

Available in 122cm x 61cm sheets
Product Code: F003



Mystic White Veneer

Mystic White has a classic white marble with a black vein appearance. With a textured top surface finish and a reflective sparkle in the material, it will provide a high end and contemporary finish for your project. Please note it is not possible to polish the material or provide a smooth gloss finish on this material. This material is suitable for all internal feature wall applications and furniture cladding.

Available in 122cm x 61cm | 240cm x 120cm sheets
Product Code: F026



Terra Rossa Veneer

This material is a beautiful light red tone with a natural slate finish. This material is suitable for internal and external walls, flooring, showers, furniture, and door cladding.

Available in 122cm x 61cm sheets
Product Code: F025



Arcobaleno Gris Veneer

Arcobaleno Gris has a natural grey slate base colour with some veining and medium to smooth texture. It has a consistent natural slate finish. This material is suitable for internal and external walls, flooring, showers, furniture, and door cladding.

Available in 122cm x 61cm sheets
Product Code: F023



Cobre Veneer

This material is our most popular red slate finish. It has a red and silver/grey base colour with a high shine and textured finish. There is veining and direction in the top surface finish which gives it an amazing aesthetic. This material is suitable for internal and external walls, flooring, showers, furniture, and door cladding.

Available in 60cm x 30cm (box of 6) | 122cm x 61cm | 240cm x 120cm sheets
Product Code: F002



Arcobaleno Colore Veneer

This material has a natural grey slate base colour mixed with dark red veins and patches. It has some beautiful swirling movements and a smooth to medium texture. This material is suitable for internal and external walls, flooring, showers, furniture, and door cladding.

Available in 122cm x 61cm | 240cm x 120cm sheets
Product Code: F034



Bianco Veneer

This material has a Grey / White textured slate finish with some random red and beige tones veining in the pattern of the material. It is a fantastic option if you are looking for a subtle and textured natural slate finished, coupled with a grey / white colour tone. This material is suitable for internal and external walls, flooring, showers, furniture, and door cladding.

Available in 60cm x 30cm (box of 6) | 122cm x 61cm | 240cm x 120cm sheets
Product Code: F028



Monsoon Black Veneer

Monsoon Black has a classic black marble appearance. With a textured top surface finish, it will provide a high end and contemporary finish for your project. Please note it is not possible to polish the material or provide a smooth gloss finish on this material. This material is suitable for all internal feature wall applications and furniture cladding.

Available in 122cm x 61cm | 240cm x 120cm sheets
Product Code: F038

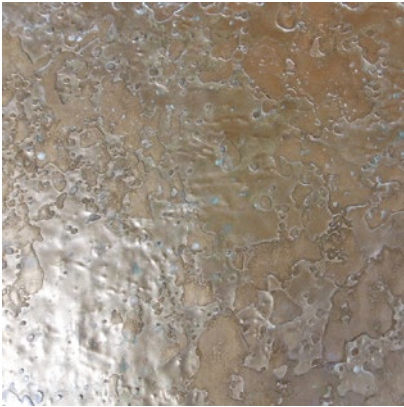


Ice Pearl Veneer

This material has a light cream textured slate finish with some random mild green veining in the pattern of the material. It is a fantastic option if you are looking for a subtle and textured natural slate finished, coupled with a white/cream colour tone. This material is suitable for internal and external walls, flooring, showers, furniture, and door cladding.

Available in 122cm x 61cm | 240cm x 120cm sheets

Product Code: F030

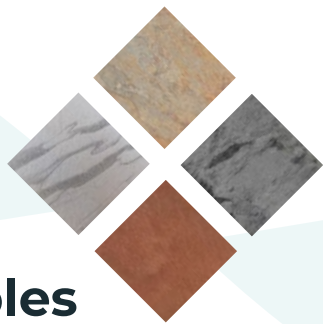


Gold Metal Veneer

Gold Metal veneer has a textured finish with a reflective shine. This material is suitable for all internal feature wall applications and furniture cladding. The material is not suitable for wet areas. We sell the adhesive, adhesive spreader tool, and tile backer boards to use with this product and you can order those in the Accessories collection of our online shop.

Available in 122cm x 61cm

Product Code: F001



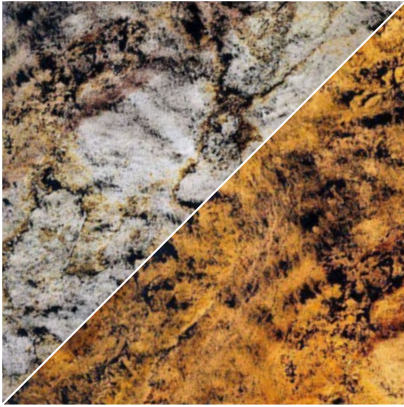
Samples

If you are wanting to view a test sample first of our veneers. Visit our website where you can order samples with prices only ranging from £5.99 to £10.99 for a small sample size: 20cm x 10cm approx or a large sample size: 30cm x 20cm approx.

Translucent Veneers.

Our range of translucent veneers. Styled to make an impact



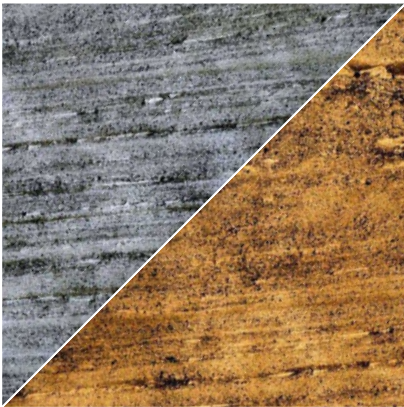


Bianco Translucent Veneer

This material has a Grey / White textured slate finish with some random red and beige tones veining in the pattern of the material. It is a fantastic option if you are looking for a subtle and textured natural slate finished, coupled with a grey / white colour tone. The sheets can then be backlit using LED light sheets or a similar light source. They are regularly used for bar and counter cladding, feature walls, signage, and lighting features. The pictures show the stone under warm light and cool light.

Available in 122cm x 61cm sheets

Product Code: FT001

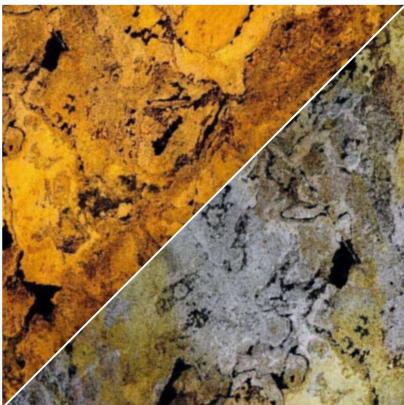


D Black Translucent Veneer

This material has a dark grey / black base colour with striking diagonal veins in the pattern of the slate. It has a smooth and natural finish. Our slate veneers are fixed to the Perspex using a transparent MS polymer adhesive such as Soudal MS clear. The sheets can then be backlit using LED light sheets or a similar light source. They are regularly used for bar and counter cladding, feature walls, signage, and lighting features. The pictures show the stone under warm light and cool light

Available in 122cm x 61cm

Product Code: FT016

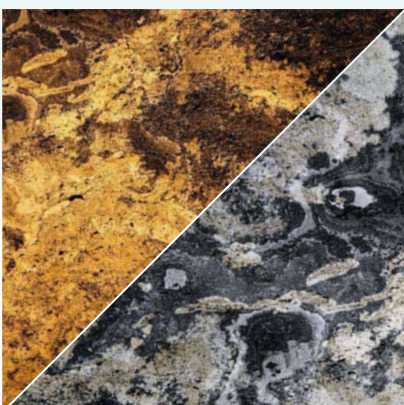


Falling Leaves Translucent Veneer

This material has a Grey/White textured slate finish with some random red and beige tones veining in the pattern of the material. It is a fantastic option if you are looking for a subtle and textured natural slate finished, coupled with a grey/white colour tone. The sheets can then be backlit using LED light sheets or a similar light source. The pictures show the stone under warm light and cool light.

Available in 122cm x 61cm | 240cm x 120cm sheets

Product Code: FT002

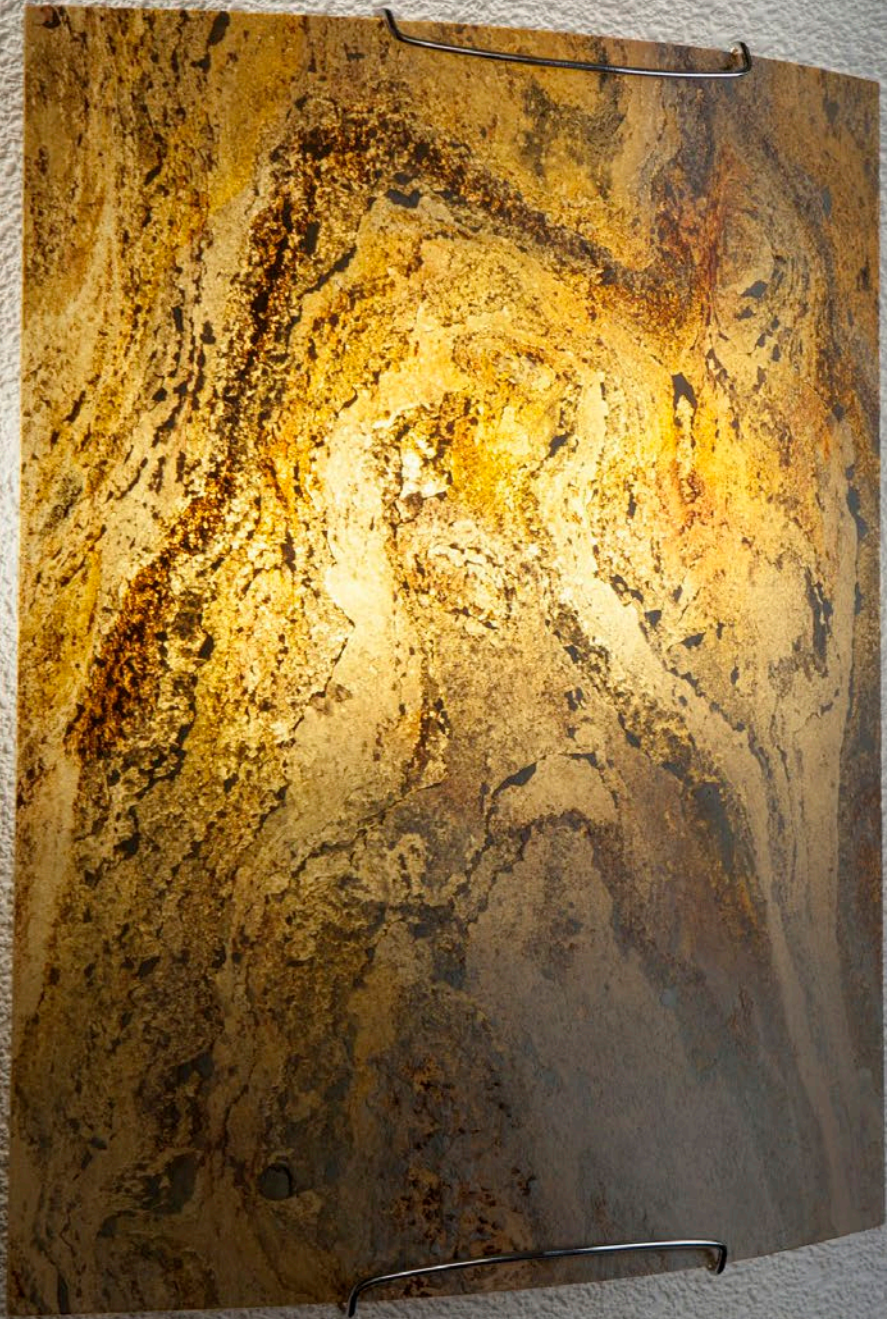


Rustique Translucent Veneer

This material has a combination of black and beige swirling patterns with a natural slate finish. Our slate veneers are fixed to the Perspex using a transparent MS polymer adhesive such as Soudal MS clear. The sheets can then be backlit using LED light sheets or a similar light source. They are regularly used for bar and counter cladding, feature walls, signage, and lighting features. The pictures show the stone under warm light and cool light.

Available in 122cm x 61cm | 240cm x 120cm sheets

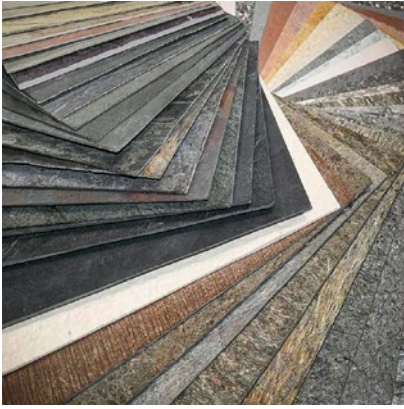
Product Code: FT005



Accessories.

All the essentials needed for applying and caring for your veneers





Sample Veneer Set (297x105mm)

This sample set contains a 297 x 105mm sample of every slate and stone veneer material available in the standard polymer resin backing format. It also includes one example of an ultra thin fabric backed material and one example of a translucent format used for back lighting. With over 50 samples provided this is the ideal solution if you want samples of the full range of materials. This sample set is much cheaper than ordering individual samples from our web shop.

Product Code: FA002



A4 Translucent Veneer Samples

A4 Translucent sample set of all translucent Slate Lite materials.

Product Code: FA001

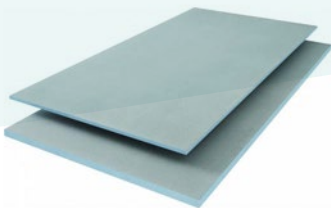
Adhesive Spreader



This A2 spreader is the best tool to use for applying and spreading adhesive on the back of our sheets or on the wall.

Product Code: FA011

Multiboard Tile Backer Board



Multiboard tile backer board by Marmox is the ideal backing board to use with our slate and stone veneers. This multiboard product item is for the 1250 x 600 x 10mm boards, sold per box with 6 boards in a box.

Our price includes VAT and delivery for one full box. We do not offer part boxes or single boards. Other sizes, thicknesses, and accessories are available please contact us for information on these items.

Product Code: FA003

Slate Lite Impregnator



Slate Lite impregnator, protection for slate and stone veneers that does not dramatically change the colour or appearance.

Product Code: FA010

Slate Lite Special Cleaner (Adhesive Remover)



The slate lite special cleaner has been developed to help remove adhesive and grout from the slate and stone veneer. Volume: 250ml

Product Code: FA005

Slate Lite Special Protector



Slate Lite special protector, strong protection for slate and stone veneers for wet areas, does change the appearance and make materials look darker. Slate-Lite Special Protection is a ready-for-use, weatherproof and non-yellowing impregnator on an organic basis. Because of the capillary forces of the stone, the Special Protection is absorbed without blocking the porosities. Therefore high effectiveness and stability are guaranteed.

Product Code: FA006

Slate-Lite Care Cleaner



Slate-Lite Care Cleaner is a mildly-alkaline soap cleaner with integrated care components, especially suited for cleaning and maintaining stone veneer products. This product is highly concentrated and economical in use.

Product Code: FA005



Soudal Fix All Crystal

Fix All Crystal is a strong hybrid polymer adhesive that we recommend for applications using our translucent sheets, such as feature walls and furniture cladding. This product is a 290ml cartridge. We recommend Soudal Fix All Crystal for adhering to our translucent slate veneer sheets. For our normal slate and stone veneer sheets, you can order our Soudal all white or black. A 122 x 61cm stone sheet requires 1 stix all cartridge depending on how the adhesive is applied. You would require x 3 – 4 stix all cartridges for one of our 240 x 120cm jumbo size sheets.

Product Code: FA009



Soudal Fix All High Tack Adhesive

Fix All High Tack is a strong hybrid polymer adhesive that we recommend for interior and exterior wet and dry applications. This product is a 290ml cartridge. A 122 x 61cm stone sheet requires 1 fix all cartridge depending on how the adhesive is applied. You would require x 3 – 4 stix all cartridges for one of our 240 x 120cm jumbo size sheets. Do not use the black colour adhesive on our Mystic White marble, use only the white colour adhesive. These adhesives are not suitable for our translucent sheets, for translucent sheets please order to fix all crystal.

Product Code: FA012



Soudal Grip All

Soudal Grip All is a strong hybrid polymer adhesive that we recommend for interior dry applications. This product is a 290ml cartridge. A 122 x 61cm stone sheet requires 1 grip for all cartridge depending on how the adhesive is applied. You would require x 3 – 4 stix all cartridges for one of our 240 x 120cm jumbo size sheets. Do not use the black colour adhesive on our Mystic White marble, use only the white colour adhesive. These adhesives are not suitable for our translucent sheets, for translucent sheets please order to fix all crystal.

Product Code: FA008



Stain Stop – Impregnator & Sealer

This solvent-based impregnator and sealer has been tested on our Slate Veneer sheets and offers protection for the top surface of our stone without dramatically changing or darkening the colour of the materials. This item comes in a 1 litre container which will cover an area of up to 30 sq mtrs depending on how liberally it is applied. Below is the product information from the manufacturer, please contact us if you require any further information on this product.

Product Code: FA007



Shipping

We endeavour to deliver all orders where the material is in stock within 5 – 10 working days. On a rare occasion, there is any delay in the delivery for any reason we will inform you by email. We deliver by courier services and will give your contact details to our courier in order to make a successful delivery.

All our products include VAT and Shipping!

Online payments

We use Paypal as our online payment merchant, they are one of the most reputable and secure online payment providers in the world. When going to complete your purchase online you will be redirected to the Paypal site where you can make your payment as a 'guest' you do not need to have a Paypal account yourself to do this.

Visit our website and online store: www.flex-stone.co.uk/shop

**get in touch
with us.**

TEL: 01858 881171

Jason Wright 07866 741261

Larry Lambert 07710 311165

info@flex-stone.co.uk

www.flex-stone.co.uk

Leicestershire, United Kingdom



FLEXSTONE



BRINGING THE STONE AGE INTO THE FUTURE

For more info visit our website and online shop:

www.flex-stone.co.uk